

**RIAS**

Research Institute of Applied Science

# Catalogue

## PRODUCTS and SERVICES



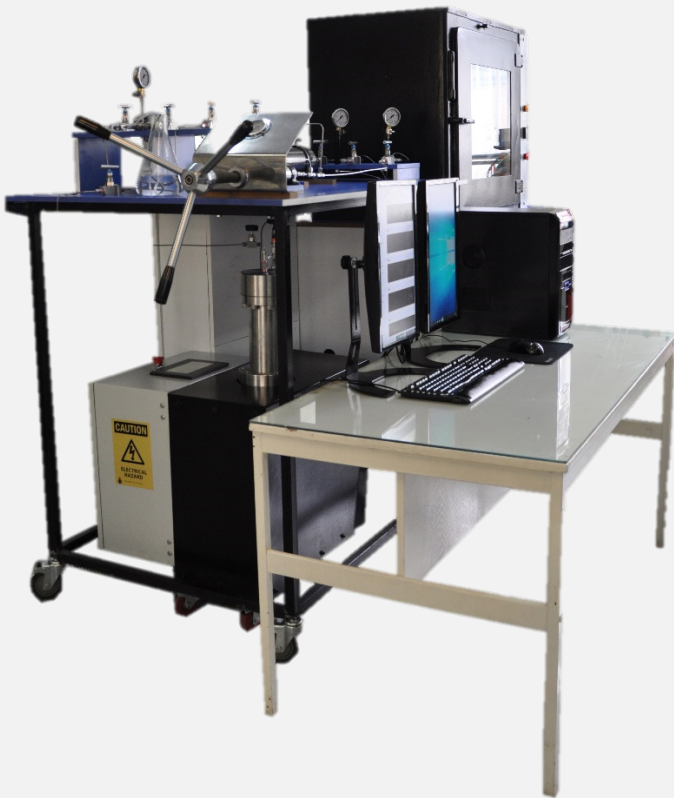
**Oil and Gas Field Development Group**

**ACECR**



Oil and Gas Field Development Group

# Core Flooding Setup



Maximum working pressure: 6000 (psi)

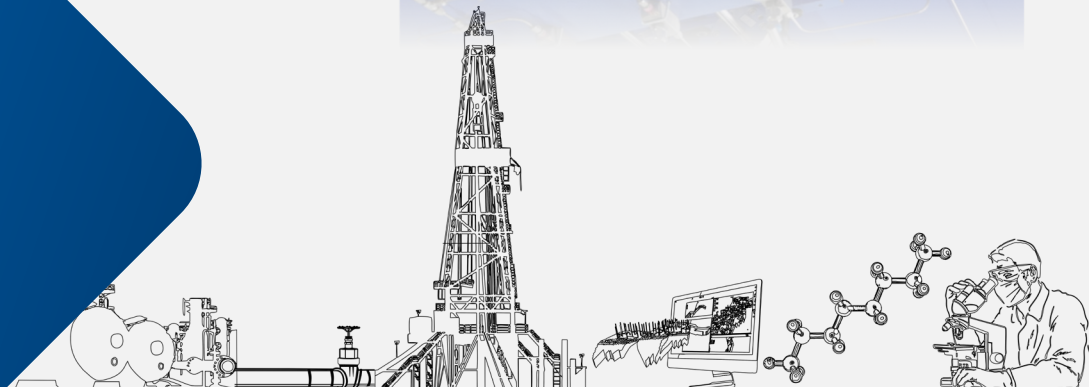
Flow rate range: 0.01 ml/min - 18.5 ml/min

Equipped with:

- Sample collection
- Pressure transmitter
- Differential pressure transmitter
- Data acquisition system
- Back pressure
- Safety relief valve
- Flow line filter
- Core holder
- Accumulator
- Injection pump
- Electrical power control panel



# Products

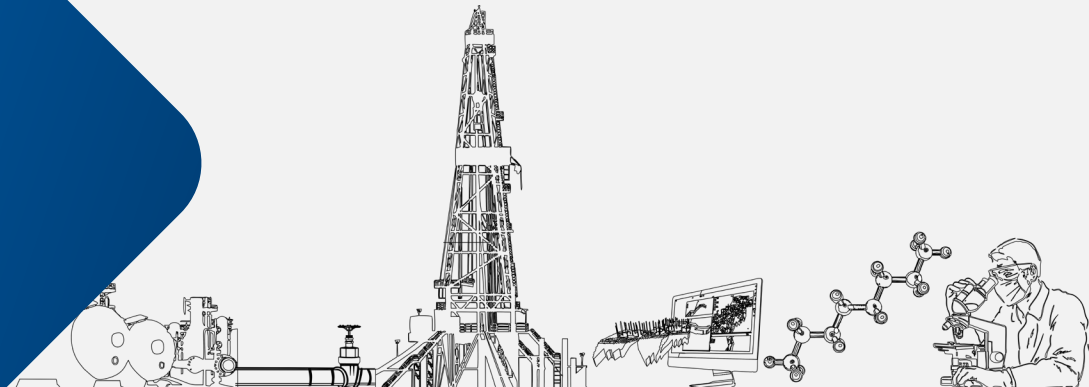


## Hydraulic Piston Accumulator

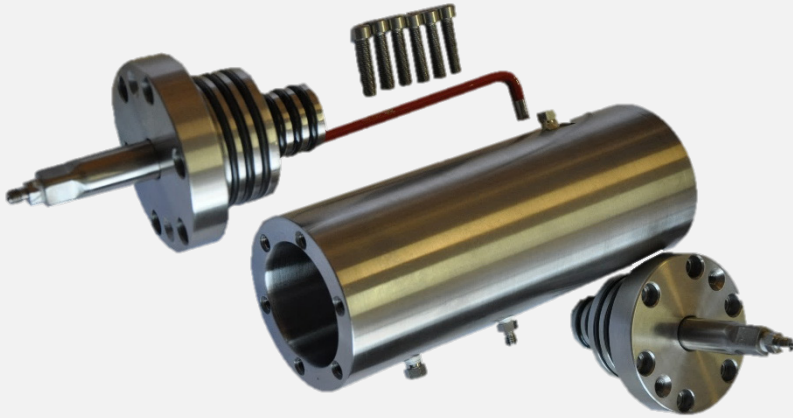


- Capacity: 250 cc, 500 cc
- Maximum working pressure: 6000 psi
- Viton rubber and packer
- Inlet and outlet size: 1/8" NPT, 1/4" NPT
- Corrosion Resistant
- Suitable for HC liquid and gas sampling
- Able to transfer the accumulated fluids
- Body: Stainless Steel(SS-316), Titanium, SS-316 coated with Teflon, SS-316 coated with Titanium, Hastelloy

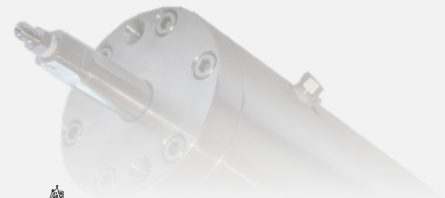
Products



## Core Holder



- Body: Stainless steel 316
- Core Size Capacity: Up to 15 cm
- Maximum working pressure: 6000 psi
- Viton rubber
- Inlet and outlet size: 1/8" NPT
- Three overburden connections
- With rubber sleeve



Products



## Fractional Collector

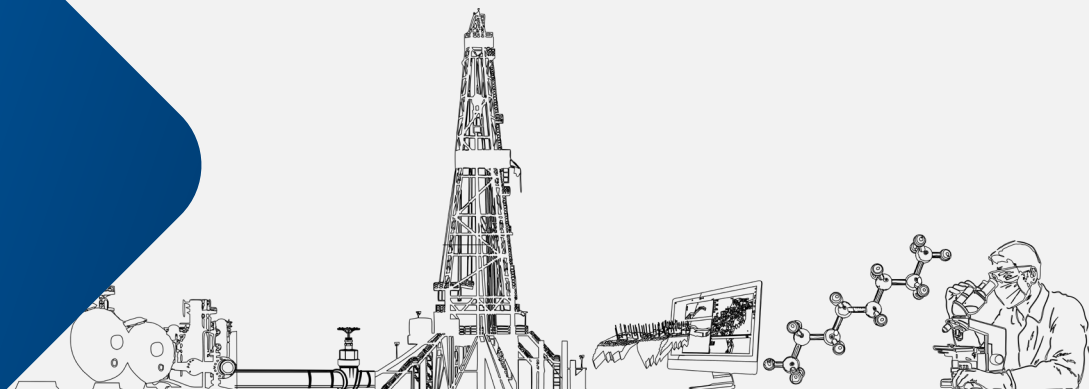
---

Automatic fluid sampling for microfluidic applications

- Body: Polylactic acid (PLA)-3D printed
- Tube size: 1.5 ml Eppendorf tubes
- Tube rack number: 88
- Programmable based on the flow rate of stream and required volume per fraction



Products



## Back Pressure

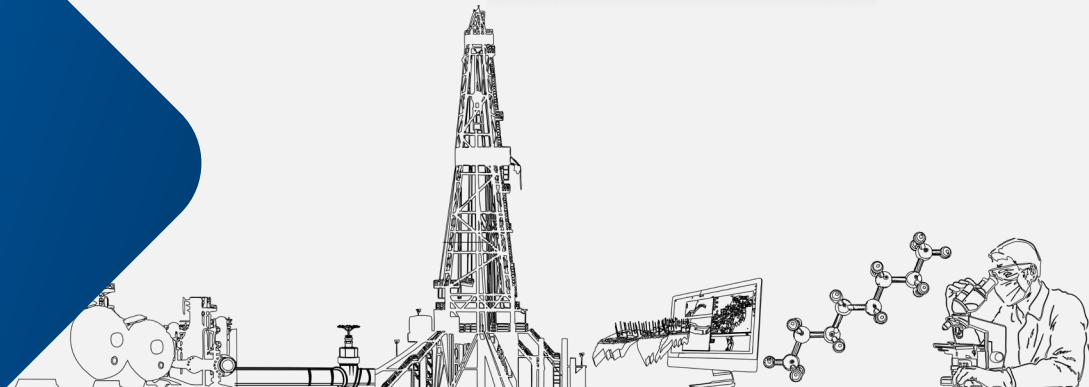
---



- Body: Stainless steel 316
- Maximum working pressure: 6000 psi
- Viton rubber
- Inlet and outlet size: 1/8" NPT
- Pressurized with gas



Products



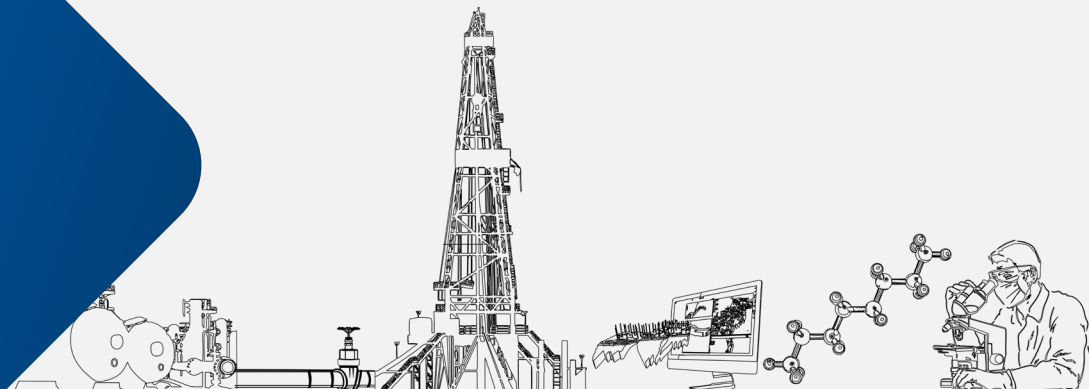
## Confining Manual Pump



- Body: Stainless steel 316
- Maximum working pressure: 6000 psi
- Viton rubber
- Outlet size: 1/8" NPT
- Equipped with pressure gauges



Products



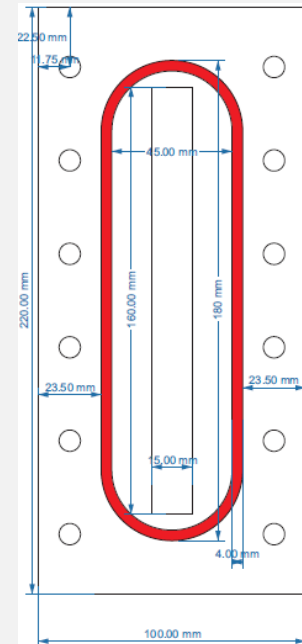
## IFT and Contact Angle Setup

- High pressure / High temperature
- Maximum working pressure: 3000 psi
- Maximum working temperature: 120 °C
- Body: Stainless Steel 316
- Equipped with pressure transmitter
- Equipped with back pressure
- High resolution camera
- Image processing software
- Coming with variety of needle sizes

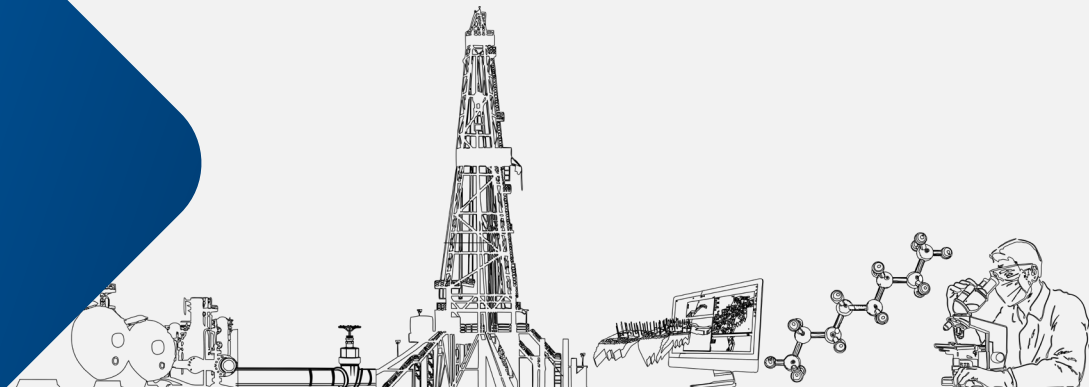


## Visual Cell

- Body: Iron
- Wet part: Nickel and Chrome plating
- Visual Cell Capacity: 30 cc
- Maximum working pressure: 3000 psi
- Maximum working temperature: 120 °C
- Seal up with Viton rubber and gasket
- Inlet and outlet size: 1/8" NPT
- Glass thickness: 30 mm
- Equipped with pressure gauges



Future  
Products





## RCAL and SCAL Analysis

---



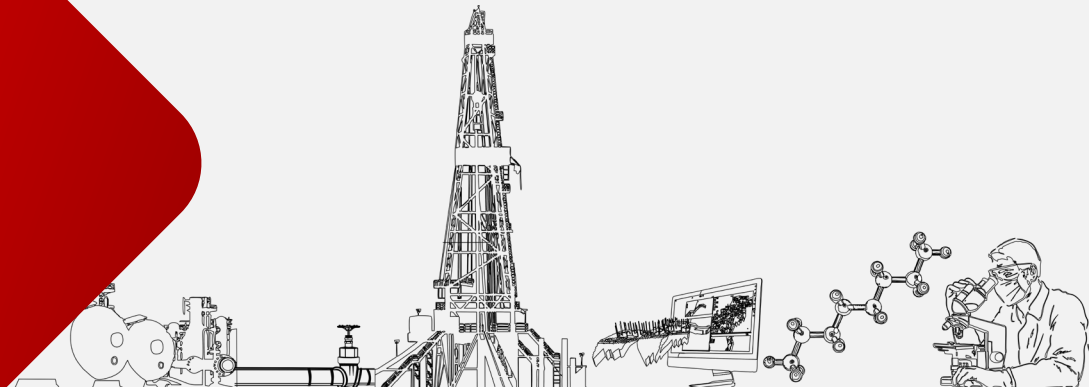
- Core Cutting
- Plugging
- Plug Cleaning and Drying
- Porosity Measurement
- Permeability Measurement
- Relative Permeability Measurement
- Capillary Pressure Measurement
- Wettability Determination

## Other Services

---

- IFT Measurement
- HP/HT Phase Behavior Scan
- Fabrication of Microfluidic Devices
- Conducting Coreflooding Tests
- Well and Reservoir Simulation

**Services**



# Contact Us



## Address:

Oil & Gas Development Group, Research Institute of Applied Sciences, Beheshti University, Shahryari Sq., Velenjak, Tehran  
Postal Code: 19839-69411

Phone Number: 021-22431933 (113)



[FDG@rias.ac.ir](mailto:FDG@rias.ac.ir)



[Rias.acecr.ac.ir](http://Rias.acecr.ac.ir)



Website



Location



PDF Version